

**Ending  
the  
HIV  
Epidemic**

**PS19-1906: Strategic Partnerships and Planning to  
Support Ending the HIV Epidemic in the United States**

**Component B: Accelerating State and Local HIV Planning Ending the  
HIV Epidemic (EHE) Plan Executive Summary**

<b>Funded Jurisdiction:</b>	Marion County, Indiana
<b>Jurisdiction's EHE Coordinator</b> <i>(name, title, organization, location, phone, email address)</i>	John Nichols, HIV Prevention Program Director, Indiana Department of Health, (317) 232-3082, <a href="mailto:JNichols1@isdh.IN.gov">JNichols1@isdh.IN.gov</a>
<b>Jurisdiction's EHE Plan Website:</b> <i>(please provide public-facing website where the EHE plan will be posted)</i>	<a href="https://thfgi.org/marion-county-ending-the-hiv-epidemic/">https://thfgi.org/marion-county-ending-the-hiv-epidemic/</a>
<b>Jurisdiction's HIV Prevention Website:</b> <i>(please provide website for local EHE information, community engagement, planning, and prevention efforts, etc.)</i>	<a href="https://thfgi.org/marion-county-ending-the-hiv-epidemic/">https://thfgi.org/marion-county-ending-the-hiv-epidemic/</a>
<b>Type of EHE Phase I jurisdiction:</b>	<input checked="" type="checkbox"/> Jurisdiction with named phase I counties <input type="checkbox"/> No named counties (statewide)
<p><b>Please list below each of the Phase I Counties and the local EHE point of contact (<i>name, title, organization, location, phone, email address, and local website</i>). ***Note: Please start each new Phase I County along with its respective contact information, on a new line preceded by a dash (-).</b></p> <ul style="list-style-type: none"> <li>- Marion County, Indiana - John Nichols, HIV Prevention Program Director, Indiana Department of Health, (317) 232-3082, <a href="mailto:JNichols1@isdh.IN.gov">JNichols1@isdh.IN.gov</a>, <a href="https://thfgi.org/marion-county-ending-the-hiv-epidemic/">https://thfgi.org/marion-county-ending-the-hiv-epidemic/</a></li> </ul>	

## Executive Summary (no more than 2 pages)

*Instructions: The Executive Summary is a synopsis of the overall EHE plan's content. It should briefly describe the novel and disruptively innovative activities that supported local community engagement activities and its respective planning process. The EHE plan serves as a jurisdictional blueprint for EHE health department jurisdictions to operationalize, implement, and monitor EHE activities. Please keep the Executive Summary to no more than 1 – 2 pages while highlighting and focusing on major, key local EHE plan accomplishments and themes.*

### **The Situational Analysis**

The Marion County Ending the HIV Epidemic (EHE) plan sets a goal, aligned with the Federal Ending the HIV Epidemic goal, to reduce the number of new HIV infections in the United States by 75% by 2025, and then by at least 90% by 2030, for an estimated 2,000 total HIV infections averted in Marion County during the coming decade. This plan has been created during a pandemic and racial unrest across our country. The burden of HIV in Marion County is carried disproportionately by people of color, particularly by African Americans, in patterns that are linked to larger social, economic, legal and health disparities. Accordingly, the Marion County Public Health Department, the Indiana Department of Health, and the many organizations and leaders participating in the Ending the HIV Epidemic Task Force commit to a focus on racial and health equity as a central aspect of achieving progress against HIV, STIs, and viral hepatitis during the coming years. In 2019, an estimated 5,575 people were living with HIV in Marion County. A total of 4,850 people living with HIV (PLHIV) have been diagnosed and informed of their status, and another 725 people are estimated to be HIV-positive but are as-yet undiagnosed and likely unaware that they have HIV. In 2019, 218 people were newly diagnosed with HIV in Marion County, continuing a five-year range of approximately 200-225 people being newly diagnosed every year in the county. Marion County's HIV epidemic is the largest in the Indianapolis metropolitan region, constituting 84% of all people living with HIV and 80% of all people newly diagnosed in the 10-county Ryan White Transitional Grant Area (TGA). Marion County's HIV epidemic is also the largest in the state of Indiana, amounting to 38% of all people living with HIV and 42% of all new HIV diagnoses in the state. Marion County's HIV prevalence is more than four times, and incidence more than three times, the corresponding rates of the remainder of the state.

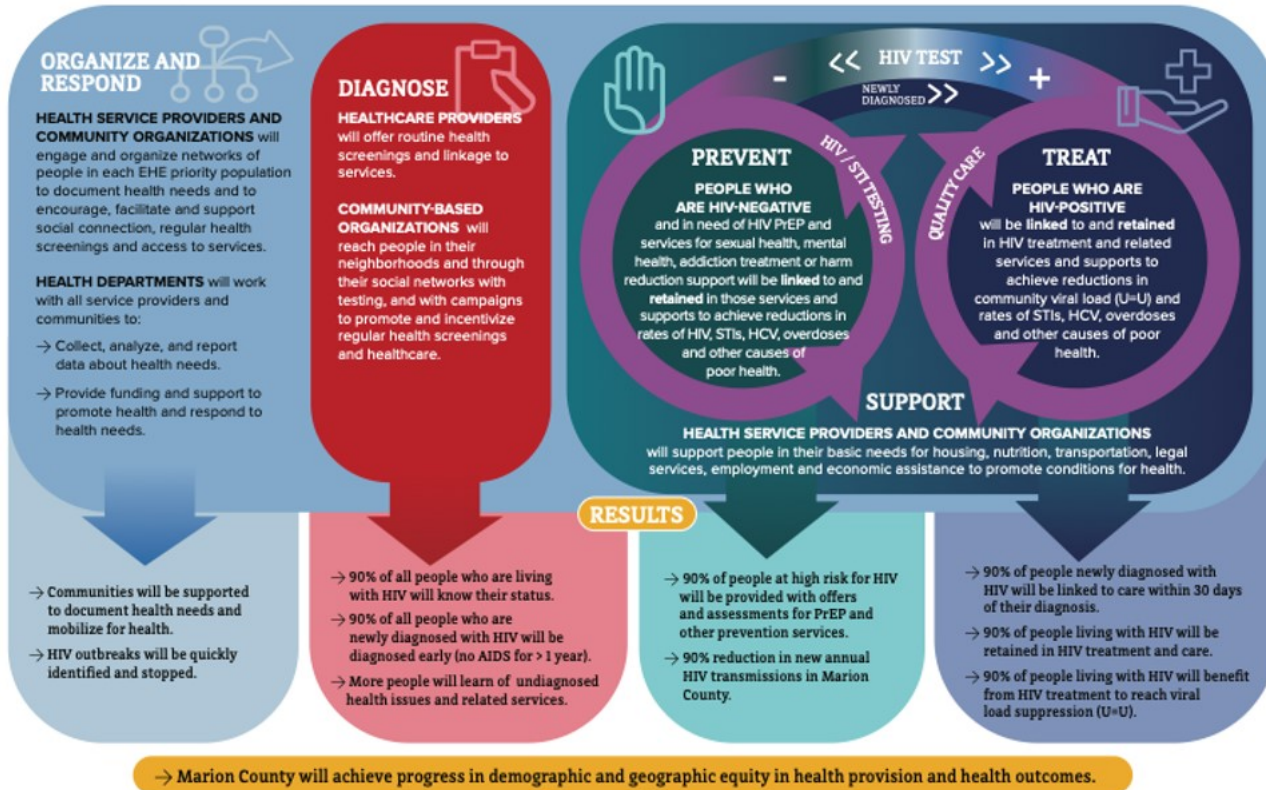
### **The Marion County EHE Needs Assessment and Community Input**

The first step in the needs assessment process was to compile and review existing documents, including the 2016 Integrated HIV Plan for the State of Indiana, the 2019 HIV epidemiology data for the Indianapolis Transitional Grant Area (TGA), the 2019 IDOH PLHIV Needs Assessment, and other relevant state and county plans and documents. A 47-member Task Force was convened to guide the planning process and provide input throughout the process. A four-tiered data collection protocol was implemented to include both qualitative and quantitative information gathering. The protocol included interviews with 52 stakeholders within Marion County who have traditionally been included in the HIV services arena as well as others who work in support services, faith-based communities, and organizations that address social determinants of health. In addition, 26 focus groups were conducted with 120 participants, with a broad cross-section of provider groups, people with lived experience, and people in at-risk populations. Next, a survey was conducted with 27 organizations in Marion County receiving HIV-related funding, with a significant outreach aiming to engage nearly all providers, including several potential new providers. Finally, the largest HIV survey in the known history of HIV work in Marion County was completed by 880 individuals in EHE priority populations, recruited through electronic distribution through social media channels and in-person distribution through service providers and faith communities. The survey was notable for engaging significant numbers of people self-identifying as Black (40%

of 880 respondents), Hispanic or Latinx (18%), gay or lesbian (28%), transgender (7%), adolescent (5%), and/or living in majority-minority zip codes (14%).

### The Overarching Goals of the Marion County EHE Plan

The plan is designed to monitor and track specific measures of progress on the four pillars of diagnose, prevent, treat, and respond. This graphic summarizes the desired outcomes of each pillar.



With the successful implementation of this plan, Marion County and Indiana can become a place where new HIV transmissions and cases of AIDS are rare, people living with HIV have treatment and services to support health and prevention, and few people are vulnerable or exposed to the virus. This is our vision --- and this plan is based on unprecedented community engagement and data gathering to create radically different approaches to ending the epidemic.